

# SBIRT for Substance Use Disorders

(Screening, Brief Intervention, and Referral to Treatment)

## Provider Reference and Resource Guide

Program Overview .....	2
Screening and Assessment .....	2
Brief Intervention.....	3
Eligibility, Billing and Documentation.....	4
Training Requirements.....	8
Referral to Treatment .....	9

## Program Overview

Screening, Brief Intervention, and Referral to Treatment (SBIRT) is designed to prevent members from developing a substance use disorder, for early detection of a suspected substance use disorder, or to refer members for treatment. These services are not intended to treat members already diagnosed with a substance use disorder or those members already receiving substance use disorder treatment services. Highmark Wholecare plans compensate providers for completing SBIRT for Substance Abuse screenings/assessment in physical healthcare settings. Highmark Wholecare plans only reimburse providers for medically necessary services furnished to eligible members. This guide provides education and billing guidance to providers to obtain reimbursement for SBIRT services. This guide will be updated periodically to reflect changes based upon industry standards and practice. Highmark Wholecare plans reserve the right to conduct post-payment medical record audits for validation purposes and in accordance with state and federal accreditation, your provider agreement, and regulatory requirements.

## Screening and Assessment

**Pre-Screen (Brief Screen/Assessment):** A pre-screen/assessment is defined by the Substance Abuse and Mental Health Services Administration (SAMHSA) as “a rapid, proactive procedure to identify individuals who may have a condition or be at risk for a condition before obvious manifestations occur.” It involves short questions relating to alcohol and drug use and must be administered prior to beginning a full screening/assessment. The prescreening can be completed by the patient in the waiting room as a written screener or as part of the rooming process when vital signs are taken by staff. The pre-screener does not have to be administered by a licensed professional, but the results must be reviewed with the patient by a licensed/credentialed provider to be eligible for reimbursement. If the pre-screening results do not indicate any need for a full screen/ assessment positive re-enforcement and education regarding prevention should still be provided and discussed. A pre-screening form will typically have 2 questions, one to assess the patient’s consumption of alcohol and one to assess the patient’s use of recreational drugs over the past 12 months.

**Full Screening/Assessment:** Full screens/assessments are administered after a patient has answered positively to the pre-screen/assessment’s questions. Full screenings/assessments entail asking patients a validated series of questions to assess the level of a patient’s substance use. **Full screens/assessments are only covered for members with positive brief screens/assessments and for members with signs, symptoms, and medical conditions that suggest risky or problem alcohol or drug use.** Full screenings/assessments should be used as a primary method for educating members about the health effects of using alcohol and other drugs. Highmark Wholecare covers screening/assessment services in a wide variety of settings to increase the chance of identifying individuals at risk for future substance abuse. Providers must use an evidence-based screening/assessment tool to identify patients at risk for problems related to substance use. **There are several evidence-based screening/ assessment tools including:**

- The Alcohol Use Disorders Inventory Test (AUDIT)
- The Drug Abuse Screening Test (DAST)
- The Alcohol, Smoking, and Substance Involvement Screening Test (ASSIST)
- The Car, Relax, Alone, Forget, Friends, Trouble Screening Test (CRAFT) for adolescents
- The Problem Oriented Screening Instrument for Teenagers (POSIT)
- Links to these screening/assessment tools, as well as others, can be located at:  
<https://oasas.ny.gov/sbirt>

## Brief Intervention

Brief interventions are interactions with patients intended to induce a change in health-related behavior. When a substance use disorder is diagnosed and appropriately added to the billing claim, Brief interventions are typically used as a management strategy for patients with risky or problematic alcohol or other drug use who are not dependent on the substance. Brief substance use intervention services are covered for members who, through an evidence-based screening/assessment tool, are identified as at-risk for a substance use disorder(s). Brief intervention may be single or multiple sessions to increase insight and awareness of the potential risk of on-going substance use to their overall health. The use of Motivational Interviewing is suggested as part of the brief intervention. Motivational interviewing is a client centered method for strengthening an individual's own motivation and commitment to making positive behavior changes and opens the conversation to provide resources and supports. Highmark Wholecare offers Motivational Interviewing training on our provider substance use portal. Intervention services may be on the same date of service as the screening/assessment or on a later date. Brief intervention is not covered prior to screening/assessment.

## Patient Education Opportunities

While not all patients will require brief intervention and referral to treatment for substance use when screened, opportunities will present themselves to provide prevention education to lessen the likelihood that a substance use disorder will develop in the future:

Opportunity	Talking Points
Adolescent populations	<ul style="list-style-type: none"> <li>Addressing Peer Pressure</li> <li>Predisposition to developing a substance use disorder</li> </ul>
Adult Populations who admit to social drinking	<ul style="list-style-type: none"> <li>Signs that social drinking is progressing to problematic drinking</li> <li>Binge drinking</li> <li>Long term health effects of alcohol</li> <li>Impact of alcohol use on chronic physical conditions</li> <li>Alcohol interactions with prescription medications</li> </ul>
Childbearing age/ Pregnancy	<ul style="list-style-type: none"> <li>Risk to unborn child related to alcohol or substance use</li> <li>Risk of opioids during pregnancy</li> </ul>
When prescribing a new medication that has the potential for misuse/ abuse/ dependency (Opioids, benzodiazepines, stimulants)	<ul style="list-style-type: none"> <li>The potential for misuse of, or dependency upon medications</li> <li>Importance of appropriate medication disposal/ drug take back programs</li> <li>Use of naloxone (Narcan), especially with high dosages of opioids being prescribed.</li> </ul>
Family member or friend of someone with a substance use disorder	<ul style="list-style-type: none"> <li>Offer resources for support groups for family and friends such as Nar Anon and Al anon</li> </ul>

## Eligibility, Billing and Documentation

### Member Eligibility

Eligible providers who screen Highmark Wholecare PA Medicaid and PA Medicare D-SNP members ages 12 and older are eligible for reimbursement for services related to SBIRT.

### Eligible Providers

The following licensed provider types are eligible for reimbursement for the Highmark Wholecare product line in which they are credentialed and have a current contract with Highmark Wholecare for clinical services.

- Physician
- Psychiatrist (PA Medicare D-SNP only)
- Physician Assistant (PA)
- Nurse Practitioner (NP)
- Clinical Nurse Specialist (CNP)
- Clinical Psychologist (CP) - (PA Medicare D-SNP only)
- Clinical Social Worker (LCSW) - (PA Medicare D-SNP only)
- Clinical Nurse - Midwife

*\*Behavioral health providers are encouraged to work with their county and/or behavioral health MCO to determine coverage for SBIRT for Highmark Wholecare's Medicaid members when the behavioral provider seeks to bill directly for services*

### Billing Information and Documentation Guidelines for SBIRT

The procedure codes used to report SBIRT services for reimbursement are consistent among all provider types. Highmark Wholecare will reimburse for the following codes:

Line of Business	Screening Type	Procedure Code	Description
PA Medicaid PA Medicare D-SNP	Pre-screening- To be billed when the pre-screening is negative and SBIRT is not needed. If the patient screens positive on the pre-screen, SBIRT should be provided and billed accordingly using the codes below.	H0049	Brief screening less than 5 minutes: Up to two pre-screens for alcohol and/or substance (other than tobacco) per 12-month period
		96127	Brief Emotional/ Behavioral Assessment screening less than 5 minutes; Covers services for alcohol and drug use in adults and adolescents. Approved to be billed at each patient visit when medically necessary
PA Medicaid PA Medicare D-SNP	SBIRT Intervention	G0396	Alcohol and/or substance (other than tobacco) abuse structured assessment (e.g., AUDIT, DAST), and brief intervention 15 to 30 minutes
		G0397	Alcohol and/or substance (other than tobacco) abuse structured assessment (e.g., AUDIT, DAST), and brief intervention greater than 30 minutes
PA Medicare D-SNP only	Annual Alcohol screening	G0442	Annual Alcohol Screening 15 minutes- can only be billed once annually
	Prevention	G0443	Up to four (4) 15 minutes, brief face to face behavioral counseling interventions per year for individuals, including pregnant women who screen positive for alcohol misuse. No coinsurance or deductible for patient.

### Documentation of SBIRT services:

The patient's medical record must support all claims submitted for SBIRT services. The medical record for covered SBIRT Services must:

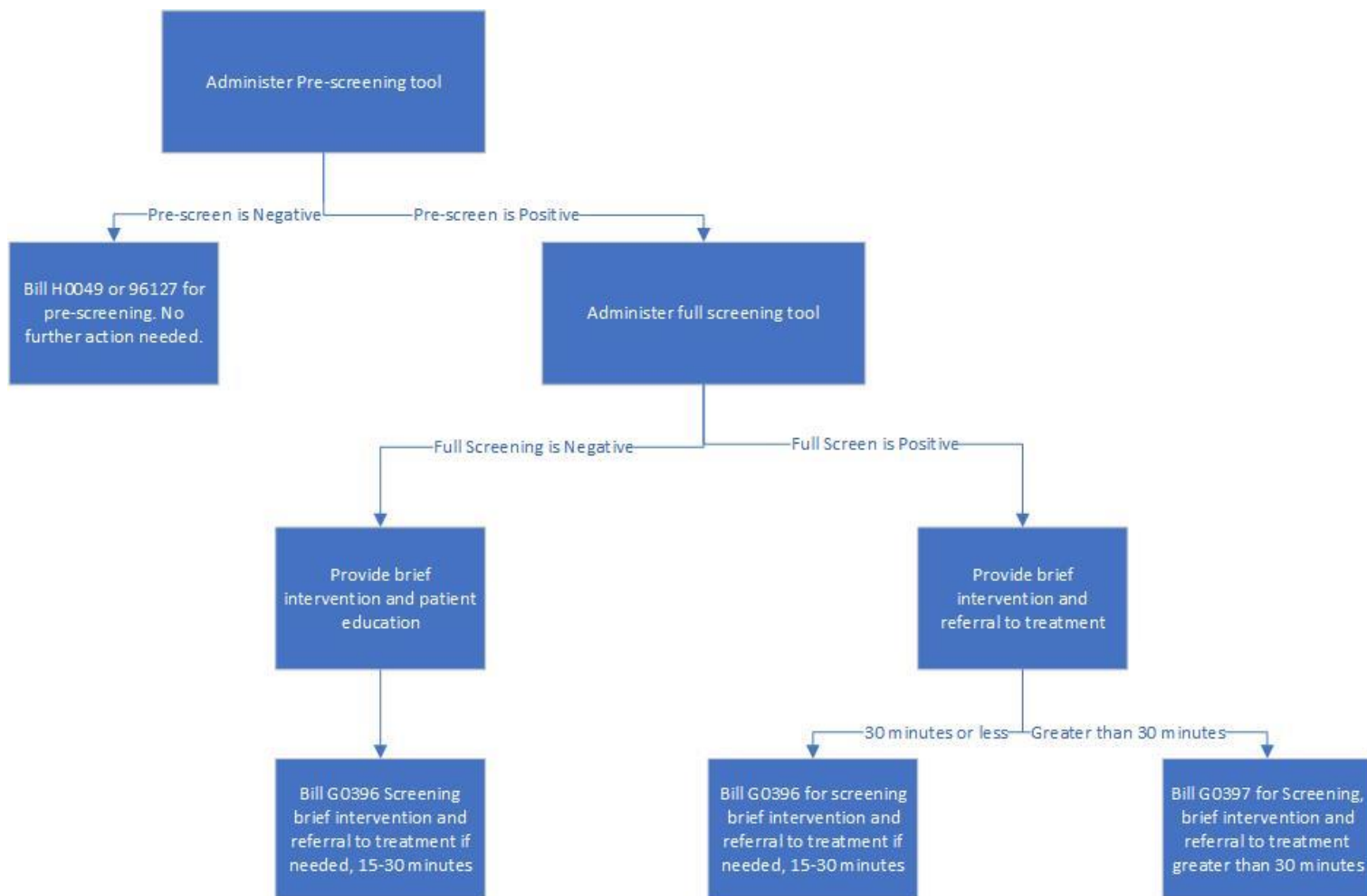
- Be complete and legible.
- Record start and stop times or total face-to-face time with the patient (because some SBIRT HCPCS codes are time-based)
- Document the patient's progress, response to changes in treatment, and diagnosis.
- Document the rationale for ordering diagnostic and other ancillary services or ensure it is easily inferred for each patient encounter, document:
  - Assessment, clinical impression, and diagnosis
  - Date and legible provider identity.
  - Physical examination findings and prior diagnostic test results
  - Plan of care
  - Reason for encounter and relevant history
  - Identify appropriate health risk factors.
  - Make past and present diagnoses accessible for the treating and consulting physicians.
  - Sign all services furnished or ordered.

Note: Incomplete records may place you at risk of a Medicare partial or full payment denial. Physicians, PAs, CNMs, CNS, and NPs may review and verify (sign and date), instead of redocumenting notes already made in the patient record. These notes may have already been made by physicians, residents, nurses, medical or physicians assistants, and advanced practice registered nurse students, or other members of the medical team, including as applicable, notes documenting the physician's, PA's, CNM's, CNS', and NP's presence and participation in the service.

### Additional Information

1. Screening Brief Intervention Treatment (SBIRT) is not designed to address smoking and tobacco cessation services unless it is a co-occurring diagnosis with another substance such as drugs or alcohol. Tobacco-only services are not a SBIRT billable benefit.
2. Screening Brief Intervention Treatment (SBIRT) may be provided face-to-face with the member, through telehealth/telemedicine, or telephonically.
3. A prior authorization request is not required.
4. SBIRT screenings/assessments are reimbursable as many times as needed for each patient.

## SBIRT Workflow



## Training Requirements

To directly deliver screening, assessment and intervention services, providers are required to participate in a training that provides information about the implementation of evidence-based protocols for screening, brief interventions, and referrals to treatment (SBIRT). Face-to-face training and consultations are available through various entities. All providers are required to retain documentation confirming that staff providing SBIRT meet the training, education, and supervision requirements. Providers billing for SBIRT screening and assessment are required to maintain documentation of completion of an evidence based SBIRT training program. Providers may be asked to present evidence of this training if an audit occurs. If appropriate documentation cannot be produced, we retain the right to void the claim payments.

<b>Highmark Wholecare</b>	Virtual and live webinar options on “Introduction to SBIRT” offered by Highmark Wholecare	Free course/ CME’s and CEU’s offered to physicians, nurses, LPC, LMFT, and Social Workers (LSW/LCSW)	Providers may access training through the Highmark Wholecare provider portal or reach out to Shannen Lauffer, Clinical Addiction Specialist. To schedule a free live virtual training @ <a href="mailto:slauffer@highmarkwholecare.com">slauffer@highmarkwholecare.com</a>
<b>Addiction Technology Transfer Center Network</b>	The Northwest ATTC offers a range of SBIRT training and technical assistance (TA) services to health care organizations and professionals.	Free online training videos and resources. CE credits options available.	Providers can find more information at <a href="https://attcnetwork.org/northwest-sbirt/">https://attcnetwork.org/northwest-sbirt/</a>
<b>Caron Treatment Services</b>	A leader in addiction medicine, they offer several resources and educational trainings related to substance use and behavioral health topics.	<b>Free</b> online virtual training for healthcare professionals and school-based professionals. No CE credits at this time.	Providers can find more information @ <a href="https://www.caron.org/digital-learning/screening-brief-intervention-and-referral-to-treatment-sbirt">https://www.caron.org/digital-learning/screening-brief-intervention-and-referral-to-treatment-sbirt</a>
<b>Health Knowledge</b>	Health Knowledge offers two virtual online SBIRT training options including SBIRT for Health & Behavioral Health Professionals and Dental School SBIRT Curriculum-Foundational Training for SUDs.	Continuing Education: This course offers 3 contact hours of continuing education for nursing, social work, and counseling professionals (CNE, NASW and NAADAC) for a fee of \$5 per hour	Providers can find more information @ <a href="https://healthknowledge.org/course/index.php?categoryid=50">https://healthknowledge.org/course/index.php?categoryid=50</a>

For more information and resources, you can also please visit the Substance Abuse and Mental Health Services Administration (SAMHSA) @ <https://www.samhsa.gov/sbirt>



## Referral to Treatment

Once a patient has screen positive for substance use and brief intervention has been provided to the patient as to why it is important for them to change their patterns of substance use, the patient may be offered a referral to treatment. In offering a referral to treatment it is important to educate the patient on the various pathways to recovery as treatment and recovery are not a one size fits all model. The patient’s life circumstances may prevent them from engaging in the level of care that is most appropriate for them. However, by offering a variety of pathways and treatment options the patient may be able to find an option that is a good fit for them and be willing to engage in treatment. Below is a table of treatment options that can be offered and reviewed with the patient.

Resource	Abbreviation	Definition
Certified Assessment Centers	CAC	Qualified, experienced, and licensed SUD treatment providers to contact with referrals for patients. Provide screening and level of care assessments for substance use disorders. These centers make it easier for people seeking SUD treatment to obtain a comprehensive assessment, receive referrals to needed services and supports and start treatment without delay.
Medication Assisted Recovery	MAR	Usually refers to FDA-Approved medications for either Opioid Use Disorder (OUD) or Alcohol Use Disorder (AUD). May also include other medications like nicotine replacement therapy, mental health medications, and other meds that support the recovery process. Medications for Opioid Use Disorder (MOUD) can include: Methadone, Buprenorphine, and Naltrexone including brand names such as Suboxone, Subutex, Vivitrol
Office based Addiction Treatment Office based Opioid Treatment	OBAT OBOT	Seeking treatment from trained professionals, particularly those experienced in managing and treating SUDs. Offers individual and group therapy sessions. May be medical, clinical, or both. Some examples of professionals include LSW, LCSW, LPC, LMFT, psychologists, providers board certified in Addiction Medicine or Psychiatry, other professional with addictions related certifications such as CAADC, CARN, CADC, CARN-AP.
Opioid Use Disorder Centers of Excellence	COE	For Medicaid members only. OUD-COE patients have an OUD, may have co-occurring BH and PH conditions, and need help navigating the care system and staying engaged in treatment. Comprehensive care coordination and management are provided as well as patient and family support that often includes referral to community/social support services (addressing SDOH needs).
Mutual Aids	AA/NA/Celebrate Recovery	Voluntary collaborative groups to serve community members. These groups create networks of care and generosity to meet the immediate needs of individuals. Can be secular (no concerned with religion, spirituality, or church) or non-secular (relating to or involving religious or spiritual matters)

PathWays Maternal Health Home	MHH	A program aimed to provide pregnant individuals with substance use disorders the support and treatment they need including pre and postnatal care, medication assisted recovery services, counseling, and wrap around services including childcare, transportation, and peer support services. The program also offers comprehensive case management, care coordination/navigation, family support, and transitional follow up care to make it easier to complete treatment plans and ensure the best possible outcomes for the individual and the baby.
Peer based recovery Supports	CRS/CPS	Services provided by individuals who have lived-experience with substance misuse and identify as in recovery from SUD. The peers help other determine and navigate their individualized recovery pathway, ensuring it best suits them and their needs and wants. Embedded in both a variety of professional treatment settings as well as within a variety of community settings.
Recovery Community Organizations	RCO	A non profit organization founded and led by people with direct lived experience with substance use challenges and recovery. No formal framework, allows individuals using any pathway to recovery to connect and provides support.
Harm Reduction		<p>A set of practical strategies and ideas aimed at reducing negative consequences associated with drug use that celebrates any positive change without expecting it. Based off a social justice movement built on a belief in, and respect for the rights of people who use drugs. Uses a spectrum of strategies that include safer use, managed use, abstinence, meeting people where they are at, and addressing conditions of use (HIV, AIDS, HCV, STIs, open wounds, infection, etc..)</p> <p><b>Syringe Service Programs (SSP)</b>- Community based prevention programs that can provide a range of services including linkage to substance use treatment; access to and disposal of sterile syringes and injection equipment; and vaccination, testing, and linkage to care and treatment for infectious diseases.</p> <p><b>Safe Consumption Sites:</b> A health and social response to the substance use epidemic, specifically IV use. They are fixed or mobile spaces where people can use pre-obtained drugs under the safety and support of trained personnel.</p> <p><b>Naloxone:</b> A life saving medicine that rapidly reverses an opioid overdose. It is an opioid antagonist, meaning that it attaches to opioid receptors and reverses and blocks the effects of other opioids. Naloxone can quickly restore normal breathing to a person if their breathing has slowed or stopped due to an opioid overdose. Naloxone has no effect on someone who does not have opioids in their system. Naloxone is also not a treatment for opioid use disorder.</p>

## Referral Resources

Once your patient has identified a pathway to recovery that they would like to pursue, there are a number of resources available to assist in locating services in their area. Below are national, state and local resources that can assist in locating services.

National Referral Resources		
Substance Abuse and Mental Health Services Administration's (SAMHSA) National Helpline	Provides referrals to local treatment facilities, support groups, and community-based organizations 24 hours a day, 7 days a week, every day of the year.	1-800-662-HELP (4357)
National Treatment Locator	Confidential and anonymous resource for persons seeking treatment for mental and substance use disorders.	<a href="http://www.findtreatment.gov/">http://www.findtreatment.gov/</a>
Suicide and Crisis Lifeline	Free and confidential support for people in distress, 24 hours a day, 7 days a week. Also offers specialized services for individuals who are deaf or hearing impaired, those who prefer to communicate in Spanish and military Veterans	Call or Text 988
Never Use Alone	Toll-free national overdose prevention, detection, life-saving crisis response and medical intervention services for people who use drugs while alone. Never Use Alone's peer operators are available 24-hours a day, 7 days a week, 365 days a year. This is a harm reduction phone line to support individuals who use substances alone and may be at risk for an overdose. An operator will ask the called for their first name, exact location, and the phone number that they are calling from. If the caller stops responding after using with the operator on the line, the operator will call EMS to alert them to a possible overdose.	1-877-696-1996
Pennsylvania Statewide Resources		
Department of Drug and Alcohol Programs (DDAP)	Can assist with locating treatment as well as funding for treatment	Phone number is the same as the SAMHSA National Helpline but will connect to a Pennsylvania resource 1-800-661-HELP (4357) <a href="https://apps.ddap.pa.gov/gethelpnow/">https://apps.ddap.pa.gov/gethelpnow/</a>
Behavioral Health Managed Care Organizations (BH-MCOs)	PA Medicaid recipients have behavioral health benefits managed by a Behavioral Health MCO. The individual's BH MCO is dependent upon the county in which they receive their Medical Assistance benefits through.	To find the BH-MCO for the county in which the individual resides visit: <a href="http://www.healthchoices.pa.gov/providers/about/behavioral/">http://www.healthchoices.pa.gov/providers/about/behavioral/</a>

<p>Single County Authorities (SCA)</p>	<p>A Single County Authority (despite the name a SCA may serve multiple neighboring counties) receives state and federal dollars through contracts with the Department of Drug and Alcohol Programs (DDAP) to plan, coordinate, programmatically and fiscally manage, and implement the delivery of drug and alcohol prevention, intervention and treatment services to respond to the needs at the local level. Services provided by the SCA vary but may include: Screening and Level of Care Assessment and referral to treatment, case management, Naloxone training and distribution, Student Assistance Programs For individuals who are under or uninsured the SCA is the payer of last resort.</p>	<p>To locate the SCA in the individual's area visit:  <a href="https://www.ddap.pa.gov/Get%20Help%20Now/Pages/County-Drug-and-Alcohol-Offices.aspx">https://www.ddap.pa.gov/Get%20Help%20Now/Pages/County-Drug-and-Alcohol-Offices.aspx</a></p>
<p>Opioid Use Disorder Centers of Excellence (OUD-COE)</p>	<p>For Medicaid members only. OUD-COE patients have an OUD, may have co-occurring BH and PH conditions, and need help navigating the care system and staying engaged in treatment. Comprehensive care coordination and management are provided as well as patient and family support that often includes referral to community/social support services (addressing SDOH needs).</p>	<p>For a comprehensive listing of OUD COEs please visit:  <a href="https://www.dhs.pa.gov/Services/Assistance/Pages/Centers-of-Excellence.aspx">https://www.dhs.pa.gov/Services/Assistance/Pages/Centers-of-Excellence.aspx</a></p>
<p><b>Mutual Aid Resources</b></p>		
<p>LifeRing</p>	<p>Secular: Abstinence-based, anonymous organization, in person and virtual meeting options</p>	<p><a href="https://lifering.org/">https://lifering.org/</a></p>
<p>SMART Recovery</p>	<p>Secular: Self management and recovery training</p>	
<p>Secular Organizations for Sobriety (SOS)</p>	<p>Secular: anonymous In person and virtual options</p>	<p><a href="https://www.sossobriety.org/">https://www.sossobriety.org/</a></p>
<p>Celebrate Recovery</p>	<p>Non-Secular: Christ Centered, 12 step recovery program</p>	<p><a href="https://www.celebraterecovery.com/">https://www.celebraterecovery.com/</a></p>
<p>Recovery Dharma</p>	<p>Non-Secular- Trauma informed, empowered approach to recovery based on Buddhist principles. The program is peer led and non-theistic. In person or online.</p>	<p><a href="https://recoverydharma.org/">https://recoverydharma.org/</a></p>
<p>Refuge Recovery</p>	<p>Non-Secular: Buddhist-oriented, non-theistic recovery program. In person or online options.</p>	<p><a href="https://www.refugerecovery.org/">https://www.refugerecovery.org/</a></p>
<p>Wellbriety</p>	<p>Non-Secular: Culturally based recovery program based on the beliefs of the Indigenous people. In person and virtual meeting options.</p>	<p><a href="https://wellbrietymovement.com/">https://wellbrietymovement.com/</a></p>

Family Support groups	<p><b>Nar-anon Family Groups:</b> A 12-Step Program for Family and Friends of individuals with substance use disorders. Also offered is Narateen which provides support specifically to teens. - In person and virtual meeting options</p> <p><b>Al-Anon Family groups:</b> A support group for family and friends of individuals with alcohol use disorders. Also offered is Alateen which provides support specifically to teens. In person and virtual meeting options.</p>	<p><a href="https://www.nar-anon.org/">https://www.nar-anon.org/</a>  <a href="https://al-anon.org/">https://al-anon.org/</a></p>
Alcoholics Anonymous	A 12 step support group for those with alcohol use disorders. In person and virtual meeting options	<a href="https://www.aa.org/">https://www.aa.org/</a>
NA	A 12 step support group for those with substance use disorders. In person and virtual meeting options	<a href="https://na.org/">https://na.org/</a>
<b>Highmark Wholecare PA Medicare D-SNP</b>		
<p>Highmark Wholecare PA Medicare D-SNP covers some levels of treatment for substance use disorder treatment including:</p> <ul style="list-style-type: none"> <li>Opioid Treatment Programs (OTPs)</li> <li>Inpatient</li> <li>Outpatient</li> <li>Medication management</li> <li>Outpatient therapy and groups</li> </ul> <p>Levels of Care that are not covered by Medicare D-SNP may be covered/ coordinated with the member’s BH-MCO (for PA)</p> <p>To locate a SUD treatment provider for a Highmark Wholecare PA Medicare D-SNP member please visit:  <a href="https://hmwholecare.healthsparq.com/healthsparq/public/#/one/ins urerCode=GW_I&amp;brandCode=GWMCAID">https://hmwholecare.healthsparq.com/healthsparq/public/#/one/ins urerCode=GW_I&amp;brandCode=GWMCAID</a></p>		

## County Referral to Treatment, Resources and Support

Providers can quickly identify treatment, resources, and support for their patients based on the county in which the individual desires to access services. Below is a county level directory of treatment providers, resources, and services.

County Level Resources					
County	Resource Type	Name	Phone Number	Address	
Adams	SCA	York Adams Drug and Alcohol Commission	717-771-9222	100 West Market Street Suite B04 York PA 17401	
	BH MCO	Community Care Behavioral Health (CCBH)	866-738-9849		
Allegheny	SCA	Allegheny County Dept. of Human Services/Office of Behavioral Health/Bureau of Drug and Alcohol Services	412-350-3328	One Smithfield Street 3rd Floor Pittsburgh PA 15222	
	BH MCO	Community Care Behavioral Health (CCBH)	800-553-7499		
	COE		Allegheny Clinic Braddock	412-359-4644	501 Braddock Avenue Braddock PA 15104
			Allegheny Health Network- Allegheny Women's Health	412-359-4644	1307 Federal Street Suite B201 Pittsburgh PA 15212
			Allegheny Health Network Forbes Family Medicine	412-359-4644	575 Coal Valley Rd Ste 209A Jefferson Hills PA 15025
			Allegheny Health Network Positive Health Clinic	412-359-4644	1307 Federal Street Pittsburgh PA 15212
			Allegheny Health Network- West Penn Medical Associates	412-359-4644	4727 Friendship Avenue Pittsburgh PA 15224
			Alliance Medical Services-Ensign and Ensign II	412-488-6360	729/739 Ensign Avenue Pittsburgh PA 15226
			Center for Behavioral Health	866-303-3128	1391 Washington Boulevard Pittsburgh PA 15206
			Crossroads Treatment Centers	800-805-6989	3000 Brownsville Road Carrick PA 15227
			Crossroads Treatment Centers	800-805-6989	5601 Stanton Avenue Pittsburgh PA 15206
			Crossroads Treatment Centers	800-805-6989	4327 Northern Pike Suite 103 Monroeville PA 15146
			Crossroads Treatment Centers	800-805-6989	606 Evans Avenue McKeesport PA 15132
			Crossroads Treatment Centers	800-805-6989	1964 Clayton Avenue Pittsburgh PA 15214
			Crossroads Treatment Centers	800-805-6989	905 Dallas Avenue Natrona Heights PA 15065
			Crossroads Treatment Centers	800-805-6989	200 Bursca Drive Suit 209 Bridgeville PA 15017
			Crossroads Treatment Centers	800-805-6989	14 North Balph Avenue Bellevue PA 15202
	Forbes Family Medicine Monroeville	412-359-4644	2550 Mosside Blvd. Monroeville PA 15146		
	Gateway Rehabilitation Center	412-604-8900 x1191	1016 Greentree Rd Suite 300 Pittsburgh PA 15220		

**County Level Resources**

County	Resource Type	Name	Phone Number	Address
Allegheny Cont'd	COEs Cont'd	JADE Wellness Center	412-380-0100 Option #1	4105 Monroeville Blvd Monroeville PA 15146
		JADE Wellness Center	412-380-0100 Option #3	809 Binham St. First Floor Pittsburgh PA 15203
		Latterman Family Health Center	412-496-4330	2347 Fifth Avenue McKeesport PA 15132
		Pyramid Pittsburgh	724-355-2454	1401 Forbes Avenue Suite 200 Pittsburgh PA 15219
		Squirrel Hill Health Center	412-422-7442	4516 Browns Hill Road Pittsburgh PA 15217
		Squirrel Hill Health Center Brentwood	412-422-7442	103 Towne Square Way Brentwood PA 15227
		Summit Medical Services	412-255-8717	3121 Smallman Street Pittsburgh PA 15201
		Tadiso	412-906-9812	1425 Beaver Avenue Pittsburgh PA 15233
		UPMC Internal Medicine Recovery Engagement Program	412-692-2462	1515 Locust Street Suit 233 Pittsburgh PA 15219
		UPMC Western Psychiatric Hospital	412-692-2273	3501 Forbes Avenue Suit 860 Pittsburgh PA 15213
	PathWAY Maternal Health Homes	Allegheny Health Network Perinatal Hope Program	412-578-5575	5140 Liberty Avenue Pittsburgh PA 15224
		Allegheny Health Network Perinatal Hope Program	412-578-5575	3063 Freeport Road Natrona Heights PA 15065
		Allegheny Health Network Perinatal Hope Program	412-578-5575	1307 Federal Street Pittsburgh PA 15212
		UPMC Magee Pregnancy and Women's Recovery Center	412-641-1211	300 Halket Street Suit 0810 Pittsburgh PA 15213
	RCO	Unity Recovery	412-586-5372	801 Bingham St. Pittsburgh PA 15203
	Harm Reduction	Prevention Point Pittsburgh (SSP)	412-247-3404	5913 Penn Ave. Pittsburgh PA 15206
	CACs	Jade Wellness Center Southside	412-380-0100	809 Bingham St. 1st. Fl Pittsburgh PA 15203
		Jade Wellness Center Monroeville	412-380-0100	4105 Monroeville Blvd Monroeville PA 15146
		Jade Wellness Center Wexford	412-380-0100	101 N Meadow Dr. Suite 324 Wexford PA 15090
		Pathway to Care and Recovery	412-325-7550	326 Third Avenue Pittsburgh PA 15222
		POWER	412-243-8755	225 Penn Ave. Pittsburgh PA 15206
		Pyramid Healthcare	866-416-1238	1401 Forbes Avenue Suite 200 Pittsburgh PA 15219
	Additional Resources	Pathway to Care and Recovery	412-325-7550	326 Third Avenue Pittsburgh PA 15222



County Level Resources					
County	Resource Type	Name	Phone Number	Address	
Armstrong	SCA	Armstrong-Indiana-Clarion Drug & Alcohol Commission	724-354-2746	10829 US Route 422 PO Box 238 Shelocta PA 15774	
	BH MCO	Carelon	877-688-8969		
Beaver	SCA	Beaver County Behavioral Health Drug & Alcohol Program	724-847-6225	1050 Eighth Street Beaver Falls PA 15010	
	BH MCO	Carelon	877-688-5970		
	COE	Allegheny Clinic Family Medicine			103 Pleasant Drive Aliquippa PA 15001
		Crossroads of Beaver		800-805-6989	1200 Sharon Road Suite 1 Beaver PA 15009
Pinnacle Treatment Services of Aliquippa		724-857-9640	400 Woodlawn Road Aliquippa PA 15001		
Bedford	SCA	Personal Solutions Inc.	814-623-5009	145 Clark Building Suite 5 Bedford PA 15522	
	BH MCO	Community Care Behavioral Health (CCBH)	866-482-2908		
Berks	SCA	Berks County Council on Chemical Abuse	610-376-8669	601 Penn Street Suite 600 Reading PA 19601	
	BH MCO	Community Care Behavioral Health (CCBH)	866-292-7886		
	COE	Berks Community Health Center		610-988-4838	1040 Liggett Avenue Reading PA 19611
		Berks Community Health Center		610-988-4838	1110 Rockland Street Reading PA 19604
		Berks Community Health Center		610-988-4838	838 Penn Street Reading PA 19602
		Crossroads Treatment Centers		800-805-6989	501 Washington Street Unit 101 Reading PA 19601
		New Directions Treatment Services		610-750-6130	832 N Park Road Wyomissing PA 19610
		Reading Hospital and Health System		848-628-9591	420 South 5th Street West Reading PA 19611
PathWAY Maternal Health Home	Reading Hospital		848-628-8000	420 South 5th Street West Reading PA 19611	
Blair	SCA	Blair County Drug and Alcohol Program, Inc.	814-381-0921	3001 Fairway Drive Suite D Altoona PA 16602	
	BH MCO	Community Care Behavioral Health (CCBH)	855-520-9715		
	COE	CleanSlate		814-369-1002	501 Howard Avenue Suite A202 Altoona PA 16601
		Crossroads Treatment Centers		800-805-6989	1017 Logan Boulevard Altoona PA 16602
		Discovery House		866-303-3128	3438 Route 764 Duncansville PA 16635
Pyramid Altoona		724-355-2454	2 Sellers Drive Altoona PA 16601		



County Level Resources				
County	Resource Type	Name	Phone Number	Address
Bradford	SCA	Bradford/Sullivan Drug and Alcohol Programs	570-265-1760	220 Main Street Unit 1 Towanda PA 18848
	BH MCO	Community Care Behavioral Health (CCBH)	866-878-6046	
	COE	CASA of Livingston County, Inc. Trinity	607-426-9654	612 Main Street Towanda PA 18848
Bucks	SCA	Bucks County Drug and Alcohol Commission	215-444-2700	55 East Court Street 4th Floor Doylestown PA 18901
	BH MCO	Magellan	877-769-9784	
	COE	Aldie Foundation	215-345-8530	11 Welden Drive Doylestown PA 18901
		Aldie Foundation	215-642-3230	2291 Cabot Blvd. West Langhorne PA 19047
		Crossroads Treatment Centers	800-805-6989	4432 East Bristol Rd Ste 1B Feasterville Trevoese 19053
		Family Service Association of Bucks County	215-747-6916	4 Cornerstone Drive Langhorne PA 19047
		Penn Foundation, Inc.	215-257-9999	807 Lawn Avenue Sellersville PA 18960
Butler	SCA	Butler County Drug and Alcohol Program	724-284-5114	124 West Diamond St. PO Box 1208 Butler PA 16003
	BH MCO	Carelon Health of PA, Inc.	877-688-5971	
	COE	Allegheny Health Network- Allegheny Valley North	724-352-8422	333 W Main Street Suite 101 Saxonburg PA 16056
		Butler Memorial Hospital	724-284-4016	One Hospital Way 5th Floor South Butler PA 16001
		Butler Memorial Hospital	724-968-5282	216 N. Washington St. Lower Level Butler PA 16001
		Crossroads Treatment Centers	724-591-5236	301 Smith Dr Unit 1 Cranberry Twp PA 16066
		Crossroads Treatment Centers	724-591-5236	220 South Main St Plaza Level Ste C Butler PA 16001
		Center for Behavioral Health	866-303-3128	301 Smith Drive Suite 3 Cranberry PA 16066
		Ellen O'Brien Gaiser Center	724-256-8882	165 Old Plank Road Butler PA 16002
		Foundations	724-355-2454	160 Hindman Road Butler PA 16001
		The Care Center Butler	724-234-1370	1610 North Main St. Butler PA 16001
RCO	The Center on Center		100 Center Avenue Butler PA 16001	
Cambria	SCA	Cambria County Drug and Alcohol Program	814-536-5388	110 Franklin St Suite 200 Johnstown PA 15901
	BH MCO	Magellan	800-424-0485	
	COE	Alliance Medical Services- Johnstown	814-269-4700	1425 Scalp Ave Suite 175 Johnstown PA 15904
		Crossroads Treatment Centers	800-805-6989	132 Walnut Street Suite A Johnstown PA 15901

**County Level Resources**

County	Resource Type	Name	Phone Number	Address
Cameron	SCA	Cameron Elk McKean Counties Alcohol & Drug Abuse Svcs.	814-642-2910	12 Church Street Suite 100 Port Allegany PA 16743
	BH MCO	Community Care Behavioral Health (CCBH)	866-878-6046	
Carbon	SCA	Carbon Monroe Pike Drug and Alcohol Commission	570-421-1960	724 Phillips Street Suite 203 Stroudsburg PA 18360
	BH MCO	Community Care Behavioral Health (CCBH)	866-473-5862	
Centre	SCA	Centre County Mental Health/Intellectual Disabilities/Early Intervention and Drug and Alcohol	814-355-6744	3500 East College Ave Suite 1200 State College PA 16801
	BH MCO	Community Care Behavioral Health (CCBH)	866-878-6046	
	COE	Crossroads Counseling, Inc.	814-231-0940	444 E. College Ave Ste 460 State College PA 16801
		Quest Bellefonte	724-355-2454	210 West High Street Bellefonte PA 16823
		Quest Bellefonte	724-355-2454	9 W. Pine Street Phillipsburg PA 16866
		State College Medical	814-235-6986	3091 Enterprise Dr Ste 150 State College PA 166801
Chester	SCA	Chester County Department of D&A Services	610-344-6620	601 Westtown Rd Ste 325 West Chester PA 19380
	BH MCO	Community Care Behavioral Health (CCBH)	866-622-4228	
	COE	Advanced Treatment Systems	866-303-3128	1825 East Lincoln Highway Coatesville PA 19320
Clarion	SCA	Armstrong-Indiana-Clarion Drug & Alcohol Commission	724-354-2746	10829 US Rt 422 PO Box 238 Shelocta PA 15774
	BH MCO	Community Care Behavioral Health (CCBH)	866-878-6046	
	COE	Crossroads Treatment Centers	800-805-6989	22868 Route 68 Clarion PA 16214
Clearfield	SCA	Clearfield Jefferson Drug and Alcohol Commission	814-371-9002	480 Jeffers St, DuBois, PA 15801
	BH MCO	Community Care Behavioral Health (CCBH)	866-878-6046	
	COE	Clearfield-Jefferson Drug and Alcohol Commission	814-371-9002	480 Jeffers Street DuBois PA 15801
		Discovery House	866-303-3128	214 Airport Road Clearfield PA 16830
Clinton	SCA	Lycoming Clinton West Branch Drug & Alcohol Commission	570-323-8543	213 West Fourth Street Williamsport PA 17701
	BH MCO	Community Care Behavioral Health (CCBH)	855-520-9787	
	COE	Crossroads Counseling, Inc.	570-983-1886	8 North Grove Street Suite 4 Lock Haven PA 17745
		Clean Slate	570-858-0109	610 High Street Lock Haven PA 17745
West Branch Drug and Alcohol Abuse Commission		570-367-8670	124 1/2 E. Main St. Lock Haven PA 17745	

County Level Resources				
County	Resource Type	Name	Phone Number	Address
Columbia	SCA	Columbia Montour Snyder Union Drug & Alcohol Program	570-275-5422	PO Box 219 5 Terrace Lane Danville PA 17821
	BH MCO	Community Care Behavioral Health (CCBH)	866-878-6046	
	COE	Crossroads Counseling, Inc.	814-231-0940	140 South Market St. Bloomsburg PA 17815
Geisinger		570-387-2055	549 Fair St. Bloomsburg PA 17815	
Crawford	SCA	Crawford County D&A Executive Commission, Inc.	814-724-4100	920 Water Street Meadville PA 16335
	BH MCO	Carelon	866-404-4561	
	COE	Crawford County Drug and Alcohol Executive Commission	814-727-4100	920 Water Street Meadville PA 16335
		Crossroads Treatment Centers	724-591-5236	15957 Conneaut Lake Rd Unit 6 Meadville PA 16335
Greenfield Counseling Services		814-337-7431	11127 Perry Highway Meadville PA 16335	
Cumberland	SCA	Cumberland Perry Drug and Alcohol Commission	717-240-6300	16 West High St Suite 302 Carlisle PA 17013
	BH MCO	PerformCare	888-722-8646	
	COE	Discovery House	866-303-3128	920 Century Drive Mechanicsburg PA 17055
Sadler Health Center Corporation		717-960-4325	100 North Hanover Street Carlisle PA 17013	
Dauphin	SCA	Dauphin County Department of Drug and Alcohol Services	717-635-2254	1100 South Cameron St Harrisburg PA 17104
	BH MCO	PerformCare	888-722-8646	
	COE	Center for Behavioral Health	866-303-3128	99 South Cameron Street Harrisburg PA 17107
		Crossroads Treatment Centers	800-802-6989	2740 Penbrook Avenue Harrisburg PA 17107
		Hamilton Health Center	877-704-8188	110 South 17th Street Harrisburg PA 17104
		Gaudenzia Common Ground	717-238-5553	3740 Chambers Hill Road Harrisburg PA 17111
	PathWAY Maternal Health Home	UPMC Pinnacle Strength Program	717-231-2200	20 North St. Hanover PA 17331
	RCO	The Rase Project- Pennsylvania	717-232-8535	5525 Locust Lane Harrisburg PA 17109
Harm Reduction	Harrisburg Harm Reduction Project	717-808-1084	P.O. Box 209 Bausman PA 17504	

County Level Resources				
County	Resource Type	Name	Phone Number	Address
Delaware	SCA	Delaware County Office of Behavioral Health	610-713-2365	20 South 69th St Third floor Upper Darby PA 19082
	BH MCO	Community Care Behavioral Health (CCBH)	833-577-2682	
	COE	Aids Care Group	610-583-3800	904 Chester Pike Sharon Hill PA 19079
		Crossroads Treatment Centers	800-805-6989	1320 Chester Pike Sharon Hill PA 19079
		Prospect CCMC LLC Crozer Chester	610-619-8600	301 West 15th Street Chester PA 19013
	RCO	PA Recovery Organization – Achieving Community Together (PRO-ACT)	215-345-6644	4459 West Swamp Road Doylestown PA 18902
The Bridge Foundation		814-834-2125	32 S St. Marys St. St. Marys PA 15857	
Elk	SCA	Cameron Elk McKean Counties Alcohol & Drug Abuse Svcs.	814-642-2910	12 Church Street Suite 100 Port Allegany PA 16743
	BH MCO	Community Care Behavioral Health (CCBH)	866-878-6046	
Erie	SCA	Erie County Office of Drug and Alcohol Abuse	814-451-6877	240 W 11th St suite b-050 Erie PA 16501
	BH MCO	Community Care Behavioral Health (CCBH)	855-224-1777	
	COE	Crossroads Treatment Centers	800-805-6989	1611 Peach Street Suite 315 Erie PA 15601
		Esper Treatment Center	814-459-0817	25 West 18th Street Erie PA 16501
		Esper Treatment Center	814-459-0817	844 East Columbus Avenue Corry PA 16407
		Pyramid Erie	724-355-2454	2409 State Street Erie PA 16503
Fayette	SCA	Fayette County Drug & Alcohol Commission Inc	724-438-3576	100 New Salem Rd # 106 Uniontown PA 15401
	BH MCO	Carelon	877-688-5972	
	COE	Crossroads Treatment Centers	800-805-6989	110 S Arch St Connellsville PA 15425
		Crossroads Treatment Centers	800-805-6989	280 McClellandtown Rd South Union Twp. PA 15401
		Southwest Behavioral Care Uniontown	724-437-4705	84 North Gallatin Avenue Uniontown PA 15401
	PathWAY Maternal Health Home	Allegheny Health Network Perinatal Hope Program	412-578-5575	97 Delaware Avenue Uniontown PA 15401
Forest	SCA	Forest -Warren Human Services D&A Program	814-726-2100	285 Hospital Drive North Warren PA 16365
	BH MCO	Community Care Behavioral Health (CCBH)	866-878-6046	

County Level Resources				
County	Resource Type	Name	Phone Number	Address
Franklin	SCA	Franklin Fulton County Drug & Alcohol Program	717-263-1256	425 Franklin Farm Ln Chambersburg PA 17202
	BH MCO	PerformCare	866-773-7917	
	COE	Pyramid Chambersburg	724-355-2454	124 Chambers Hill Drive Chambersburg PA 17201
Pyramid Waynesboro		724-355-2454	626 North Grant Street Waynesboro PA 17268	
Fulton	SCA	Franklin Fulton County Drug & Alcohol Program	717-263-1256	425 Franklin Farm Ln Chambersburg PA 17202
	BH MCO	PerformCare	866-773-7917	
Greene	SCA	Greene County Human Services Program	724-852-5276	19 S Washington St Ft Jackson Bldg Waynesburg PA 15370
	BH MCO	Community Care Behavioral Health (CCBH)	866-878-6046	
	COE	Fayette Treatment Center	724-966-5000	2695 E Roy Furman Highway Carmichaels PA 15320
		The Care Center Greene	724-627-6108	35 South West St. Waynesburg PA 15370
Huntingdon	SCA	Juniata Valley Tri-County	717-242-1446	31 S. Dorcas St. Suite D Lewistown PA 17044
	BH MCO	Community Care Behavioral Health (CCBH)	866-878-6046	
Indiana	SCA	Armstrong-Indiana-Clarion Drug & Alcohol Commission	724-354-2746	10829 US Rt 422 PO Box 238 Shelocta PA 15774
	BH MCO	Carelon	877-688-5974	
	COE	Crossroads Treatment Centers	800-805-6989	655 Church Street Indiana PA 15701
	PathWAY Maternal Health Home	Indiana Regional Medical Center	724-357-7000	835 Hospital Rd. Indiana PA 15701
	RCO	Indiana County Recovery Center	724-717-6492	574 Philadelphia St. #201 Indiana PA 15701
Jefferson	SCA	Clearfield Jefferson Drug and Alcohol Commission	814-371-9002	480 Jeffers Street Suite A DuBois PA 15801
	BH MCO	Community Care Behavioral Health (CCBH)	866-878-6046	
	COE	Clearfield-Jefferson Drug and Alcohol Commission	814-371-9002	480 Jeffers Street DuBois PA 15801
Juanita	SCA	Juniata Valley Tri-County Drug & Alcohol Commission	717-242-1446	31 S. Dorcas St. Suite D Lewistown PA 17044
	BH MCO	Community Care Behavioral Health (CCBH)	866-878-6046	
Lackawanna	SCA	Lackawanna/Susquehanna Office of D & A Programs	570-963-6820	123 Wyoming Ave Scranton PA 18503
	BH MCO	Community Care Behavioral Health (CCBH)	866-668-4696	

County Level Resources				
County	Resource Type	Name	Phone Number	Address
Lancaster	SCA	Lancaster County Drug and Alcohol Commission	717-299-8023	150 North Queen St Suite 410 Lancaster PA 17603
	BH MCO	PerformCare	888-722-8646	
	COE	Penn Medicine Lancaster General Hospital	717-544-1427	555 North Duke Street Lancaster PA 17602
	Harm Reduction	Lancaster Harm Reduction Project	717-669-7527	1377-C Spencer Ave Lancaster PA 17603
Lawrence	SCA	Lawrence County Drug and Alcohol Commission Inc.	724-658-5580	20 E. Washington St 2nd Fl New Castle PA 16101
	BH MCO	Carelon	877-688-5975	
	COE	Crossroads Treatment Centers	800-805-6989	125 East North St Suite 123A New Castle PA 16101
Discovery House		866-303-3128	2710 West State Street New Castle PA 16101	
Lebanon	SCA	Lebanon County Commission on Drug and Alcohol Abuse	717-274-0427	220 East Lehman Street Lebanon PA 17046
	BH MCO	PerformCare	888-722-8646	
	COE	Advanced Treatment Systems	866-303-3128	3030 Chestnut Street Lebanon PA 17042
Lehigh	SCA	Lehigh County Drug & Alcohol Services	610-782-3555	17 South Seventh St Allentown PA 18101
	BH MCO	Magellan	866-238-2311	
	COE	Crossroads Treatment Centers	800-805-6989	3050 Hamilton Blvd 220B Allentown PA 18103
		Habit OPCO	866-303-3128	2970 Corporate Court Orefield PA 18069
		LVPF Family Medicine — Southside	610-674-4550	1648 South 4th Street Allentown PA 18103
		Neighborhood Health Centers	610-841-8400	218 North 2nd Street Allentown PA 18102
		Pyramid Allentown	724-355-2454	1605 N Cedar Crest Blvd Ste 602 Allentown PA 18104
	Treatment Trends, Inc.	610-432-7694	1130 Walnut Street Allentown PA 18102	
PathWAY Maternal Health Home	Connections	484-809-0276	1944 6th St. Allentown PA 18103	
Luzerne	SCA	Luzerne Wyoming Counties Drug and Alcohol Program	570-826-8790	111 North Pennsylvania Ave 2nd Floor Wilkes-Barre PA 18701
	BH MCO	Community Care Behavioral Health (CCBH)	866-668-4696	
	COE	Cleanslate	570-846-2720	100 Wilkes Barre Blvd. Ste 103 Wilkes-Barre PA 18702

County Level Resources				
County	Resource Type	Name	Phone Number	Address
Luzerne (cont'd)	COEs (cont'd)	Geisenger	570-808-3700	8 Church St. Wilkes-Barre PA 18702
		Hazleton Treatment Services	570-497-5176	534 West Broad Street Hazleton PA 18201
		Miners Medical	570-822-5146	43 South Main St. Ashley PA 18706
		The Wright Center Medical Group	570-499-1290	2 Sharpe St. Kingston PA 18704
		The Wright Center Medical Group	570-499-1290	335 S Franklin St. Wilkes-Barre PA 18702
		The Wright Center Medical Group	570-499-1290	37 William St. Pittston PA 18640
Lycoming	SCA	Lycoming Clinton West Branch D & A Commission	570-323-8543	213 West Fourth Street Williamsport PA 17701
	BH MCO	Community Care Behavioral Health (CCBH)	855-520-9787	
	COE	Cleanslate	570-505-8331	131 W. Edwin Street Williamsport PA 17701
		Crossroads Counseling Inc.	570-323-7535	501 East Third St. Williamsport PA 17701
		Crossroads Counseling Inc.	570-323-7535	520 W Fourth St Ste 30 D Williamsport PA 17701
		Geisenger	570-368-4477	425 Market Street Williamsport PA 17701
		West Branch Drug and Alcohol Abuse Commission	570-323-8543	213 W. 4th St. Williamsport PA 17701
Williamsport Family Medical	570-505-1123	2062 Lycoming Creek Rd Suite 8 Williamsport PA 17701		
McKean	SCA	Cameron Elk McKean Counties Alcohol & Drug Abuse Svcs.	814-642-2910	12 Church Street Suite 100 Port Allegany PA 16743
	BH MCO	Community Care Behavioral Health (CCBH)	866-878-6046	
	COE	Crossroads Treatment Centers	800-805-6989	195 East Main St. Bradford PA 16701
Mercer	SCA	Mercer County Behavioral Health Commission Inc	724-662-1550	8406 Sharon Mercer Road Mercer PA 16137
	BH MCO	Carelon	866-404-4561	
	COE	Center for Behavioral Health	866-303-3128	1914 Mercer Avenue Farrell PA 16121
		Crossroads Treatment Centers	800-805-6989	17 16th Avenue Greenville PA 16125
Mifflin	SCA	Juniata Valley Tri-County Drug & Alcohol Commission	717-242-1446	31 S. Dorcas St. Suite D Lewistown PA 17044
	BH MCO	Community Care Behavioral Health (CCBH)	866-878-6046	
	COE	Geisenger	717-242-4200	21 Geisinger Lane Lewistown PA 17044



County Level Resources				
County	Resource Type	Name	Phone Number	Address
Monroe	SCA	Carbon Monroe Pike Drug and Alcohol Commission	570-421-1960	724 Phillips Street Suite 203 Stroudsburg PA 18360
	BH MCO	Community Care Behavioral Health (CCBH)	866-473-5862	
	COE	Mount Pocono Medical	570-839-7247	1151 Pocono Blvd Unit #3 Mt Pocono PA 18344
Pyramid Bartonsville		724-355-2454	3180 PA-611 #19 Bartonsville PA 18321	
Montgomery	SCA	Montgomery County Department of Behavioral Health and Developmental Disabilities	610-278-3642	Montgomery County Human Services Center PO Box 311 Norristown PA 19404
	BH MCO	Magellan	877-769-9782	
	COE	Community Health & Dental Care, Inc	610-326-9460	351 W. Schuylkill Rd. Ste G-15A Pottstown PA 19465
		Crossroads Treatment Centers	800-805-6989	152 West Main St. Norristown PA 19401
		Discovery House	866-303-3128	2755 Philmont Ave Ste 110 Huntington Valley PA 19006
		Habit OPCO	866-303-3128	301 Circle of Progress Drive Pottstown PA 19464
Resources for Human Development	484-681-5278	107 E Main St. Suite 310 Norristown PA 19401		
Montour	SCA	Columbia Montour Snyder Union Drug & Alcohol Program	570-275-5422	PO Box 219 5 Terrace Lane Danville PA 17821
	BH MCO	Community Care Behavioral Health (CCBH)	866-878-6046	
Northampton	SCA	Northampton County D&A Division	610-829-4725	2801 Emrick Blvd 3 <sup>rd</sup> floor Bethlehem, PA 18020
	BH MCO	Magellan	866-238-2312	
	COE	Cleanslate	484-893-1482	1401 Easton Ave Bethlehem PA 18018
		Crossroads Treatment Centers	800-805-6989	175 South 21st St. Suite LL Easton PA 18042
		Neighborhood Health Centers	484-544-3113	1101 Northampton St Suite 102 Easton PA 18042
		Neighborhood Health Centers	484-408-0755	1210 East 4th Street Bethlehem PA 18015
New Directions Treatment Services	610-758-8011	2422 Brodhead Road Bethlehem PA 18020		
Northumberland	SCA	Northumberland County Behavioral Health / Intellectual & Developmental Services	570-495-2154	217 N Center St, Sunbury, PA 17801
	BH MCO	Community Care Behavioral Health (CCBH)	866-878-6046	
	COE	Crossroads Counseling Inc.	570-323-7535	352 Arch Street Sanbury PA 17801
Habit OPCO		866-303-3128	759 Susquehanna Trail Watsontown PA 17777	



County Level Resources					
County	Resource Type	Name	Phone Number	Address	
Perry	SCA	Cumberland Perry Drug and Alcohol Commission	717-240-6300	16 West High St Ste 302 Carlisle PA 17013	
	BH MCO	Performcare	888-722-8646		
	COE	Hamilton Health Center of Newport	717-204-7685	46 Redd Hill Court Newport PA 17074	
Philadelphia	SCA	Office of Addiction Services	888-545-2600	1101 Market St Floor 1, Philadelphia, PA 19107	
	BH MCO	Community Behavioral Health	888-545-2600	2929 Arch Street #2600 Philadelphia PA 19104	
	COE	CleanSlate	CleanSlate	267-238-2406	3380 Memphis Street Philadelphia PA 19134
		CleanSlate	CleanSlate	215-433-1855	2300 Broad Street Suite 205 Philadelphia PA 19145
		Corecare Behavioral Health Kirkbride Center	Corecare Behavioral Health Kirkbride Center	215-471-2600	111 North 49th Street Philadelphia PA 19139
		Courage Medicine	Courage Medicine	267-217-3217	7198 Castor Avenue Suite 200 Philadelphia PA 19149
		Courage Medicine	Courage Medicine	267-217-3217	3751 Island Avenue Suite 201 Philadelphia PA 19153
		Crossroads Treatment Center	Crossroads Treatment Center	800-805-6989	2820 West Girard Avenue Philadelphia PA 19140
		Crossroads Treatment Center	Crossroads Treatment Center	800-805-6989	504 South Street First Floor Philadelphia PA 19147
		Crossroads Treatment Center	Crossroads Treatment Center	800-805-6989	2317 East Westmoreland St Philadelphia PA 19134
		Crossroads Treatment Centers of North Broad	Crossroads Treatment Centers of North Broad	800-805-6989	2307 North Broad Street Philadelphia PA 19132
		Crossroads Treatment Centers of West Tabor	Crossroads Treatment Centers of West Tabor	800-805-6989	1335 West Tabor Road Philadelphia PA 19141
		Crossroads Treatment Centers of West Philly	Crossroads Treatment Centers of West Philly	800-805-6989	323 South 60th Street Philadelphia PA 19134
		Excel Medical Center, LLC	Excel Medical Center, LLC	267-335-5264 x248	7515 Stenton Ave Philadelphia PA 19150
		Excel Medical Center, LLC	Excel Medical Center, LLC	267-335-5264 x249	521 West Girard Avenue Philadelphia PA 19123
Excel Medical Center, LLC		Excel Medical Center, LLC	267-335-5264 x250	208 West Chelton Avenue Philadelphia PA 19144	
Excel Medical Center, LLC	Excel Medical Center, LLC	267-335-5264 x251	135 East Lehigh Avenue Suite 109 Philadelphia PA 19125		
Excel Medical Center, LLC	Excel Medical Center, LLC	267-335-5264 x252	5201 Old York Rd Suite 180 Philadelphia PA 19141		
Fairmount Primary Care Center at Girard Medical Center	Fairmount Primary Care Center at Girard Medical Center	215-827-2010	801 W. Girard Ave Philadelphia PA 19122		

County Level Resources				
County	Resource Type	Name	Phone Number	Address
Philadelphia (cont'd)	COEs (cont'd)	Maternal Addiction Treatment, Education and Research (MATER) Family Center	215-955-3792	1233 Locust St. Suite 201 Philadelphia PA 19107
		Parkside Recovery	215-879-6116	5000 Parkside Avenue Philadelphia PA 19131
		Parkside Recovery at Temple Episcopal	215-634-2520	100 E. Lehigh Avenue Philadelphia PA 19125
		Parkside Recovery Knights Road	215-632-9040	11082 Knights Road Philadelphia PA 19154
		Parkside Recovery Germantown	215-754-0240	5429 Germantown Avenue Philadelphia PA 19144
		Pathways to Housing PA	215-390-1500	5201 Old York Rd Suite 108 Philadelphia PA 19141
		Penn Presbyterian Ctr for Opioid Recovery & Engagement	215-662-9876	51 North 39th Street Philadelphia PA 19104
		Public Health Management Corporation	215-279-9666	1900 North 9th Street Philadelphia PA 19122
		Public Health Management Corporation	215-765-6690	5675 North Front Street Philadelphia PA 19120
		Public Health Management Corporation	445-444-6364	1500 Market St. Philadelphia PA 19102
		Public Health Management Corporation	267-398-0247	1200 Callowhill St. Philadelphia PA 19123
		Temple Health	215 707-1800	3322 North Broad Street Philadelphia PA 19140
		Temple Health	215-707-1800	1316 West Ontario Street Philadelphia PA 19140
		Temple Health	215 707-1800	3509 North Broad Street Philadelphia PA 19140
		Temple Health	215-707-1800	7600 Central Avenue Philadelphia PA 19111
		Temple Health	215-707-1800	3401 North Broad Street Philadelphia PA 19140
		Temple Health	215-707-1800	333 Cottman Avenue Philadelphia PA 19111
		Thomas Jefferson University NARP	215-890-6277	1021 S. 21st Street Philadelphia PA 19146
		Wedge Medical Center, Inc.	215-276-3922	2009 S Broad Street Philadelphia PA 19148
		Wedge Medical Center, Inc.	215-276-3922	3609 N Broad Street Philadelphia PA 19140
	Wedge Medical Center, Inc.	215-276-3922	4243 Frankford Avenue Philadelphia PA 19124	
Harm Reduction	Prevention Point Philadelphia (SSP)	215-634-5272	2913-15 Kensington Ave Philadelphia PA 19134	
	Operations in My Back Yard	215-515-5281	Mobile	
Pike	SCA	Carbon Monroe Pike Drug and Alcohol Commission	570-421-1960	724 Phillips Street Suite 203 Stroudsburg PA 18360
	BH MCO	Community Care Behavioral Health (CCBH)	866-473-5862	

County Level Resources				
County	Resource Type	Name	Phone Number	Address
Potter	SCA	Potter County Drug and Alcohol	814-544-7315	62 North St P.O. Box 241 Roulette PA 16746-0241
	BH MCO	Community Care Behavioral Health (CCBH)	866-878-6046	
Schuylkill	SCA	Schuylkill County Drug and Alcohol	570-621-2890	108 S Claude A Lord Blvd 2nd Fl Pottsville PA 17901
	BH MCO	Community Care Behavioral Health (CCBH)	866-878-6046	
	COE	Clinical Outcomes Group, Inc	570-628-6990	1 South 2nd Street Pottsville PA 17901
Snyder	SCA	Columbia Montour Snyder Union Drug & Alcohol Program	570-275-5422	PO Box 219 5 Terrace Lane Danville PA 17821
	BH MCO	Community Care Behavioral Health (CCBH)	866-878-6046	
Somerset	SCA	Somerset County Drug and Alcohol	814-445-1530	300 N Center Ave Suite 360 Somerset PA 15501
	BH MCO	Community Care Behavioral Health (CCBH)	866-483-2908	
	COE	Crossroads Treatment Centers	800-805-6989	651 South Center Avenue Somerset PA 15501
Sullivan	SCA	Bradford/Sullivan Drug and Alcohol Programs	570-265-1760	220 Main Street Unit 1 Towanda PA 18848
	BH MCO	Community Care Behavioral Health (CCBH)	866-878-6046	
Susquehanna	SCA	Lackawanna/Susquehanna Office of Drug & Alcohol Programs	570-963-6820	123 Wyoming Ave Scranton PA 18503
	BH MCO	Community Care Behavioral Health (CCBH)	866-668-4696	
	COE	NEPA Community Health Care	570-879-5249	25066 US- 11 #4 Hallstead PA 18822
NEPA Community Health Care		570-278-7500	498 S Main St Suite D Montrose PA 18801	
Tioga	SCA	Tioga County Department of Human Services	570-724-5766	1873 Shumway Hill Road Wellsboro PA 16901
	BH MCO	Community Care Behavioral Health (CCBH)	866-878-6046	
	COE	Cleanslate	570-505-8331	8 south Main Street Rear Unit 1 Mansfield PA 16933
		Crossroads Counseling Inc.	570-948-9111	1873 Shumway Hill Road Wellsboro PA 16901
Union	SCA	Columbia Montour Snyder Union Drug & Alcohol Program	570-275-5422	PO Box 219 5 Terrace Lane Danville PA 17821
	BH MCO	Community Care Behavioral Health (CCBH)	866-878-6046	
Venango	SCA	Venango County Substance Abuse Program	814-432-9744	One Dale Avenue Franklin PA 16323
	BH MCO	Carelon	866-404-4561	
	COE	Crossroads Treatment Centers	800-805-6989	150 Prospect Avenue Suite 303 Franklin PA 16323

County Level Resources				
County	Resource Type	Name	Phone Number	Address
Warren	SCA	Forest -Warren Human Services D&A Program	814-726-2100	285 Hospital Drive North Warren PA 16365
	BH MCO	Community Care Behavioral Health (CCBH)	866-878-6046	
Washington	SCA	Washington Drug and Alcohol Commission, Inc.	724-223-1181	90 West Chestnut St Ste 310 T Washington PA 15301
	BH MCO	Carelon	877-688-5976	
	COE	Crossroads Treatment Centers	800-805-6989	160 West Pike Street Canonsburg PA 15317
		Crossroads Treatment Centers	800-805-6989	212 Wilson Ave Washington PA 15301
		Crossroads Treatment Centers	800-805-6989	528 Fallowfield Avenue Charleroi PA 15022
		Charleroi Treatment Services	724-565-1310	15 Arentzen Blvd Charleroi PA 15022
		The Care Center Washington	724-470-9776	75 East maiden St. Suite 103 Washington PA 15301
		Washington Drug and Alcohol Center of Excellence	724-223-1181	90 West Chestnut St Ste 310 T Washington PA 15301
Wayne	SCA	Wayne County Drug and Alcohol Commission	570-253-6022	318 Tenth Street Honesdale PA 18431
	BH MCO	Community Care Behavioral Health (CCBH)	866-878-6046	
	COE	The Wright Center Medical Group	570-499-1290	103 Spruce St. Hawley PA 18428
Westmoreland	SCA	Westmoreland Drug and Alcohol Commission, Inc	724-243-2220	1200 Maronda Way Monessen PA 15062
	BH MCO	Carelon	877-688-5977	
	COE	Crossroads Treatment Centers	800-805-6989	125 East Otterman Street Greensburg PA 15601
		Crossroads Treatment Centers	800-805-6989	220 Bessemer Road Mt. Pleasant PA 15666
		Crossroads Treatment Centers	800-805-6989	5927 PA Route 819 Latrobe PA 15650
		Mon Valley Community Health	724-314-3015	2 Eastgate Ave Suite 101 Monessen PA 15062
		Southwest Behavioral Care Latrobe	724-532-1700	1929 Dailey Ave Latrobe PA 15650
		Southwest Behavioral Care New Kensington	724-339-6860	408 Eighth St. New Kensington PA 15068
	RCO	Faces and Voices of Recovery (FAVOR) Western PA	724-676-2111	736 Lincoln Street Bolivar PA 15923
		Lost Dreams Awakening	724-594-7903	408 8th St Rear Entrance New Kensington Pa 15068
Sage's Army Inc. Greensburg location		724-863-5433	6044 Lincoln Hwy #400 Greensburg PA 15601	
Sage's Army Inc. North Huntingdon location		724-863-5433	216 Fourth Street North Huntingdon PA 15642	

County Level Resources				
County	Resource Type	Name	Phone Number	Address
Wyoming	SCA	Luzerne Wyoming Counties Drug and Alcohol Program	570-826-8790	111 N. Pennsylvania Ave 2nd Fl Wilkes-Barre PA 18701
	BH MCO	Community Care Behavioral Health (CCBH)	866-668-4696	
York	SCA	York Adams Drug and Alcohol Commission	717-771-9222	100 West Market Street Suite B04 York PA 17401
	BH MCO	Community Care Behavioral Health (CCBH)	866-542-0299	
	COE	Hanover Treatment Services	717-969-8400	120 Penn Street Hanover PA 17331
		Pyramid York	724-355-2454	104 Davies Drive York PA 17402
	PathWAY Maternal Health Home	Open Arms Recovery Center and WellSpan	717-969-2894	300 Frederick St. #3 Hanover PA 17331
	Harm Reduction	York Harm Reduction Project	717-468-6846	300 Block of South George St. York PA 17401

Health benefits or health benefit administration may be provided by or through Highmark Wholecare, coverage by Gateway Health Plan, an independent licensee of the Blue Cross Blue Shield Association (“Highmark Wholecare”).